

Client _____ Quantity _____
 Project _____ Position _____

Snack GN counter 3 doors

Model: TP17/1B-490

Cod: T10301000404



Tavolo refrigerato Snack con piano, Plug-In, 3 porte con altezza corpo tavolo 490 mm, classe energetica D, classe climatica 5 heavy duty e gas refrigerante ecologico R290. Completo di 1 griglia GN1/1, configurabile con cassettiere 1/1, 1/2+1/2. Range di temperatura -15°-22°C con refrigerazione ventilata. Struttura con isolamento 60 mm. Interno/esterno in acciaio inox AISI 304 compreso schiena esterna, fondo esterno in acciaio colaminato. Realizzato con tecnologia FSS - Fast Service System - per un service facile e veloce. Predisposto per collegamento a sistema di supervisione remoto.

Technical data

Top:	With top
Gross capacity:	278 lt
Temperature range:	-15°-22°C
Refrigerant unit:	Plug-In
Energetic class:	D
Energy efficiency index:	58
Annual consumption:	1913 kW/h annum
24h consumption:	5,241 kW/h/24h
Climate class:	5
Cooling gas:	R290
Defrost:	Hot gas
Body height:	490 mm
Valve:	Supplied standard with solenoid
Dimensions (mm):	1780×700×630 mm
Packing dimensions:	1875×800×998 mm
Gross weight:	150 Kg
Voltage:	220-240 V - 50 Hz
Total rate:	850 W
Absorbed Current:	3,9 A
Cooling capacity:	569 W*
*:	Evap. -30°C Cond. +55°C

Features

Standard equipment:	3 coppie guida, 3 griglie plastificate GN1/1
Control:	Electronic, display flush with the panel
Doors:	3 doors, self-closing, reversible with 105° stop
Door gasket:	Magnetic, triple chamber and easily replaceable
Insulation:	60 mm thickness - CFC/HCFC free
Exterior/interior finishing:	Exterior interior and back in AISI 304 stainless steel. Base in colaminated steel
Inner corners:	Rounded for easy cleaning and ensuring maximum hygiene
Handle:	Stainless steel AISI 304, 2 mm thick
Racks and slides:	Stainless steel AISI 304
Feets:	Stainless steel AISI 304, adjustable h 100-150 mm
Cosmo:	Ready for connection to Cosmo Hub

Accessories and variants

Drawers 1/2

Special size of technical compartment

Technical compartment on the left

Lock with key for drawer 1/1

Lock with key for drawer 1/2

RAL customisable colouring

Plug-in water unit

Power supply frequency 60Hz

Other special voltage

Adjustable feet h 145/195 mm

4 Swivel and brake castors h 128 mm

Brackets for GN pans for drawer

GN1/2 container + lids kit for drawer, h 150 mm

GN1/3 container + lids kit for drawer, h 150 mm

Bottles shelf, stainless steel coating for shelf 350

Stainless steel shelf GN1/1

Plastic coated shelf GN1/1

Pair of type C slides 505 mm

IP44 schuko socket with cover

Serial interface, RS485 cable

Cosmo connection kit

Removable plinth GN 2D h 50 mm

Removable plinth GN 2D h 100 mm

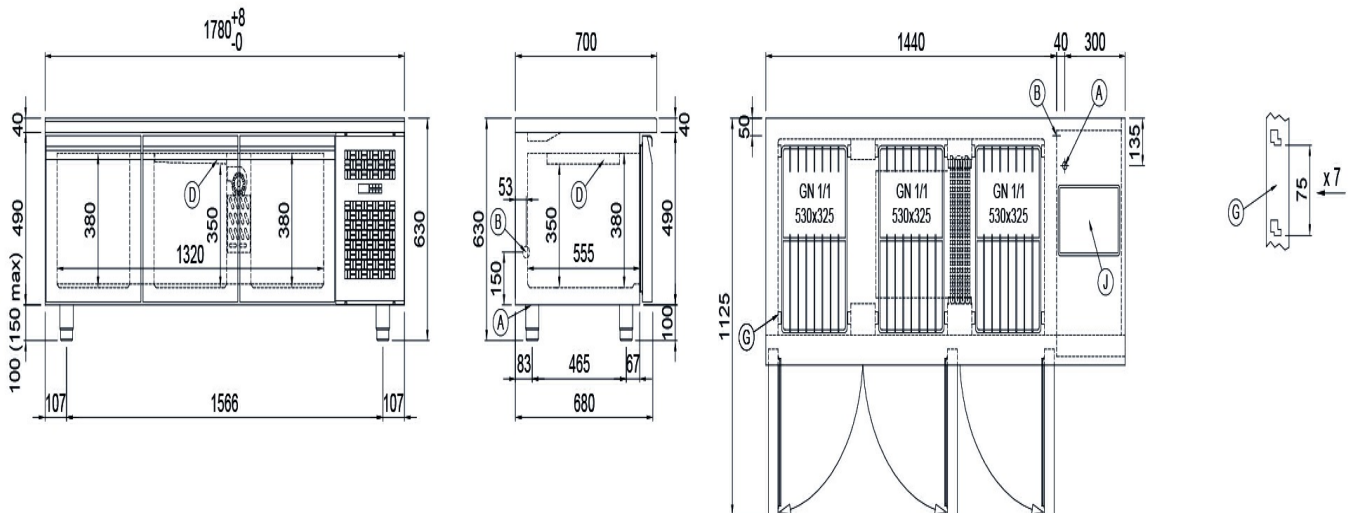
Removable plinth GN 2D h 150 mm

COSMO - wi-fi control

Cosmo is the wi-fi technology that allow to connect and monitor all Coldline appliances. Connect Snack counters to a Cosmo hub (MODI, VISION or LEVTRONIC) and from the app you can check the operating conditions of each machine and receive alerts in case of abnormal functioning.

*The installation requires a kit for the replacement of the racks

Technical draw



A: Power supply cable outlet

B: Condensation water drain

D: Airflow conveyor

G: Racks pitch

J: Automatic evaporation of condensing water

In order to constantly offer the best possible products we reserve the right to make changes on technical specifications without incurring any obligation for equipment previously or subsequently sold.