

Client \_\_\_\_\_ Quantity \_\_\_\_\_  
 Project \_\_\_\_\_ Position \_\_\_\_\_

## Snack GN counter 4 doors

**Model:** TP21/1B-490

**Cod:** T10401000404



Tavolo refrigerato Snack con piano, Plug-In, 4 porte con altezza corpo tavolo 490 mm, classe energetica E, classe climatica 5 heavy duty e gas refrigerante ecologico R290. Completo di 1 griglia GN1/1, configurabile con cassettiere 1/1, 1/2+1/2. Range di temperatura -15°-22°C con refrigerazione ventilata. Struttura con isolamento 60 mm. Interno/esterno in acciaio inox AISI 304 compreso schiena esterna, fondo esterno in acciaio colaminato. Realizzato con tecnologia FSS - Fast Service System - per un service facile e veloce. Predisposto per collegamento a sistema di supervisione remoto.

### Technical data

<b>Top:</b>	With top
<b>Gross capacity:</b>	380 lt
<b>Temperature range:</b>	-15°-22°C
<b>Refrigerant unit:</b>	Plug-In
<b>Energetic class:</b>	E
<b>Energy efficiency index:</b>	75,5
<b>Annual consumption:</b>	2725 kW/h annum
<b>24h consumption:</b>	7,466 kW/h/24h
<b>Climate class:</b>	5
<b>Cooling gas:</b>	R290
<b>Defrost:</b>	Hot gas
<b>Body height:</b>	490 mm
<b>Valve:</b>	Supplied standard with solenoid
<b>Dimensions (mm):</b>	2260×700×630 mm
<b>Packing dimensions:</b>	2355×800×998 mm
<b>Gross weight:</b>	200 Kg
<b>Voltage:</b>	220-240 V - 50 Hz
<b>Total rate:</b>	850 W
<b>Absorbed Current:</b>	3,9 A
<b>Cooling capacity:</b>	569 W*
<b>*:</b>	Evap. -30°C Cond. +55°C

### Features

<b>Standard equipment:</b>	4 coppie guida, 4 griglie plastificate GN1/1
<b>Control:</b>	Electronic, display flush with the panel
<b>Doors:</b>	4 doors, self-closing, reversible with 105° stop
<b>Door gasket:</b>	Magnetic, triple chamber and easily replaceable
<b>Insulation:</b>	60 mm thickness - CFC/HCFC free
<b>Exterior/interior finishing:</b>	Exterior interior and back in AISI 304 stainless steel. Base in colaminated steel
<b>Inner corners:</b>	Rounded for easy cleaning and ensuring maximum hygiene
<b>Handle:</b>	Stainless steel AISI 304, 2 mm thick
<b>Racks and slides:</b>	Stainless steel AISI 304
<b>Feets:</b>	Stainless steel AISI 304, adjustable h 100-150 mm
<b>Cosmo:</b>	Ready for connection to Cosmo Hub

## Accessories and variants

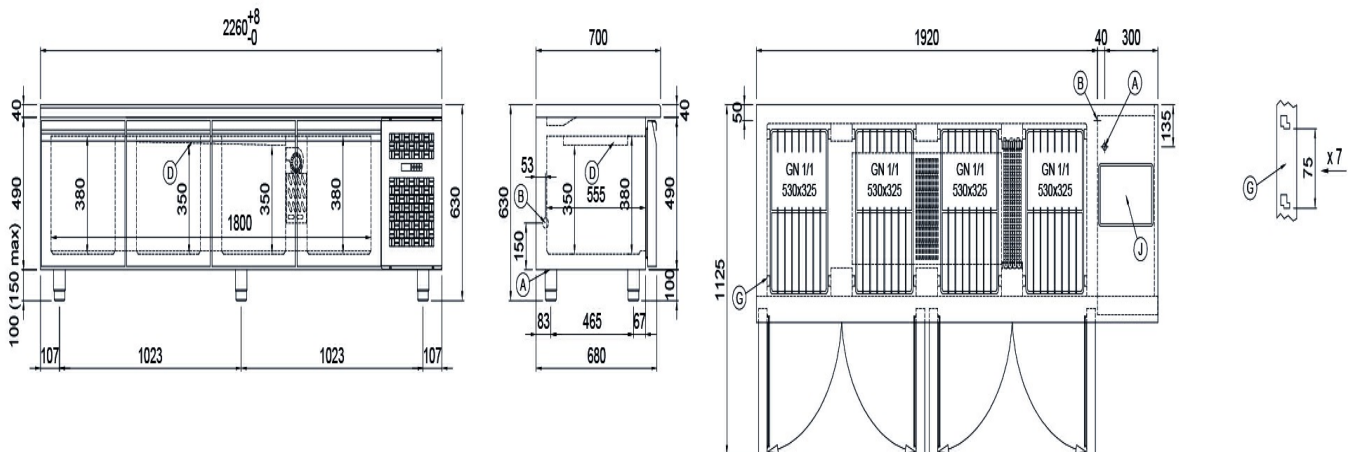
Drawers 1/1	Pair of type C slides 505 mm
Drawers 1/2	IP44 schuko socket with cover
Special size of technical compartment	Serial interface, RS485 cable
Technical compartment on the left	Cosmo connection kit
Lock with key for drawer 1/1	Removable plinth GN 4D h 50 mm
Lock with key for drawer 1/2	Removable plinth GN 4D h 100 mm
RAL customisable colouring	Removable plinth GN 4D h 150 mm
Plug-in water unit	
Power supply frequency 60Hz	
Other special voltage	
Adjustable feet h 145/195 mm	
6 Swivel and brake castors h 128 mm	
Brackets for GN pans for drawer	
GN1/2 container + lids kit for drawer, h 150 mm	
GN1/3 container + lids kit for drawer, h 150 mm	
Bottles shelf, stainless steel coating for shelf 350	
Stainless steel shelf GN1/1	
Plastic coated shelf GN1/1	

### COSMO - wi-fi control

Cosmo is the wi-fi technology that allow to connect and monitor all Coldline appliances. Connect Snack counters to a Cosmo hub (MODI, VISION or LEVTRONIC) and from the app you can check the operating conditions of each machine and receive alerts in case of abnormal functioning.

\*The installation requires a kit for the replacement of the racks

## Technical draw



**A:** Power supply cable outlet

**B:** Condensation water drain

**D:** Airflow conveyor

**G:** Racks pitch

**J:** Automatic evaporation of condensing water

In order to constantly offer the best possible products we reserve the right to make changes on technical specifications without incurring any obligation for equipment previously or subsequently sold.